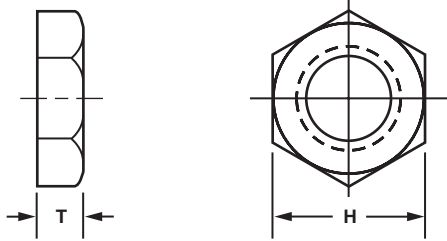


Table of Contents

PDF Catalog Files	Page
Warranty	1
EZ Order Instructions	2
FMR2002 Front-Mount Retainer/Standoff	7-8
Standoffs & Spacers	9-91
Locking Fasteners	92-108
Self Locking Devices	109
FMR2002 Front-Mount Retainer Assembly	110-112
Screws	113-190
Retainers	191-198
Washers	199-244
Nuts & Bushings	245-255
Miscellaneous Components	256-260
Handles	261-275
Material & Technical Specs	276-288

POTENTIOMETER, VOLUME CONTROL AND SWITCH NUTS

Hexagon



Available Material (see page 276)	
A	Aluminum
B*	Brass
N	Nylon
S*	Steel
SS	Stainless Steel

* Normally stocked; others allow approximately 2 weeks for delivery.

ORDER EXAMPLE:

903000 - B - 9

Basic Part Number	Material: See chart	Finish: See page 278
-------------------	---------------------	----------------------

Thickness may be changed to accommodate your requirements, add to part number.
 EXAMPLE: 903000-B-9 (T = .250)

TECH TIPS

Our shipping department assures all stock orders ship in 8 hours.

Thread Size	Basic Part Number	Dimensions	
		H Hex	T Thickness
2-56	903000	3/16	1/16
3-48	903002	3/16	1/16
4-36	903004	1/4	3/32
4-40	903006	1/4	3/32
6-32	903008	5/16	7/64
8-32	903010	5/16	1/8
10-32	903012	5/16	1/8
12-24	903014	3/8	1/8
1/4-20	903016	7/16	3/16
1/4-28	903018	3/8	3/32
1/4-28	903020	3/8	1/8
1/4-28	903022	7/16	.100
1/4-32	903024	5/16	1/16
1/4-32	903026	5/16	5/64
1/4-32	903028	11/32	1/16
1/4-32	903030	11/32	1/8
1/4-32	903032	3/8	3/32
1/4-32	903034	3/8	1/8
1/4-40	903036	5/16	1/16
5/16-24	903038	7/16	1/8
5/16-32	903040	7/16	.101
3/8-27	903042	1/2	1/16
3/8-32	903044	1/2	1/16
3/8-32	903046	1/2	3/32
3/8-32	903048	1/2	1/8
3/8-32	903050	9/16	3/32
7/16-28	903052	9/16	3/32
15/32-32	903054	9/16	1/16
15/32-32	903056	9/16	5/64
15/32-32	903058	9/16	3/32
15/32-32	903060	5/8	1/16
15/32-32	903062	5/8	5/64
1/2-32	903064	9/16	5/64
1/2-28	903066	5/8	1/8
5/8-24	903068	3/4	3/32

NUTS & BUSHINGS

KNURLED THUMB NUTS

ORDER EXAMPLE:

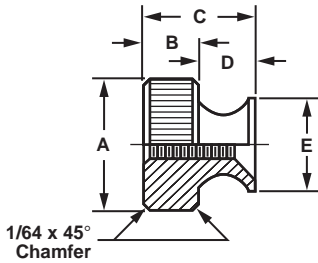
67300 - A - 1

Basic Part Number: 67300
 Material: A (See chart)
 Finish: 1 (See page 278)

Available Material (see page 276)

A	Aluminum
B	Brass
S	Steel
SS	Stainless Steel

For parts not listed, contact sales office.



Basic Part Number	Thread	A +.020 -.000	B ± .015	C Ref.	D ± .010	E ± .031
67300	2-56	1/4	1/8	1/4	1/8	3/16
67302	4-40	5/16	1/8	1/4	1/8	1/4
67304	6-32	3/8	1/8	9/32	5/32	11/32
67306	8-32	7/16	1/8	9/32	5/32	3/8
67308	10-24	1/2	5/32	11/32	3/16	13/32
67310	10-32	1/2	5/32	11/32	3/16	13/32
67312	1/4-20	9/16	5/32	3/8	7/32	15/32
67314	5/16-18	5/8	3/16	13/32	7/32	17/32
67316	3/8-16	3/4	7/32	15/32	1/4	5/8

NUTS & BUSHINGS

HEX THUMB NUTS

ORDER EXAMPLE:

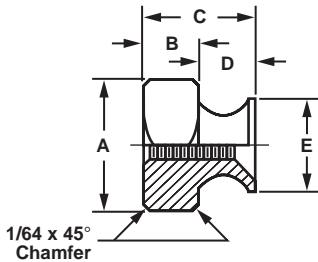
67300 - A - 1

Basic Part Number: 67300
 Material: A (See chart)
 Finish: 1 (See page 278)

Available Material (see page 276)

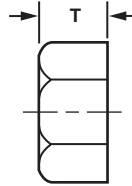
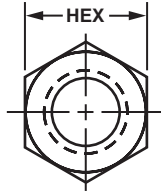
A	Aluminum
B	Brass
S	Steel
SS	Stainless Steel

For parts not listed, contact sales office.



Basic Part Number	Thread	A Hex	B ± .015	C Ref.	D ± .010	E ± .031
67318	2-56	1/4	1/8	1/4	1/8	3/16
67320	4-40	5/16	1/8	1/4	1/8	1/4
67322	6-32	3/8	1/8	9/32	5/32	11/32
67324	8-32	7/16	1/8	9/32	5/32	3/8
67326	10-24	1/2	5/32	11/32	3/16	13/32
67328	10-32	1/2	5/32	11/32	3/16	13/32
67330	1/4-20	9/16	5/32	3/8	7/32	15/32
67334	5/16-18	5/8	3/16	13/32	7/32	17/32
67336	3/8-16	3/4	7/32	15/32	1/4	5/8

HEX MACHINE SCREW NUTS Standard and Stock Size



Available Material (see page 276)	
B	Brass
S	Steel
SS	Stainless Steel
N	Nylon
D	Delrin

ORDER EXAMPLE:

3608 - SS - 12

Basic Part Number Material: See chart Finish: See page 278

Any one dimension may be changed, add to the part number.
 EXAMPLE: 3609-SS-12 (T = .375)

Thread	Hex	Thickness	Basic Part Number	Finish
2-56	3/16	1/16	3608	
4-40	1/4	3/32	3609	
6-32	5/16	7/64	3613	
8-32	11/32	1/8	3617	
10-32	3/8	1/8	3622	
1/4-20	7/16	3/16	3626	
1/4-28	7/16	3/16	3630	
5/16-18	1/2	17/64	3631	
3/8-16	5/8	21/64	3632	
3/8-24	5/8	21/64	3636	
1/2-13	3/4	7/16	3640	
1/2-20	3/4	7/16	3642	
5/8-11	15/16	35/64	3644	
5/8-18	15/16	35/64	3646	
3/4-10	1-1/8	41/64	3648	
3/4-16	1-1/8	41/64	3649	

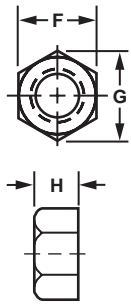
TECH TIPS

Call our sales department to find out the benefits of our new product - FMR2002.

ASSORTED NYLON NUTS Stocked in Nylon Zytel 101 UL 94V2

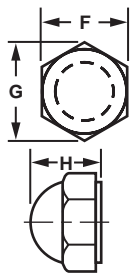
NUTS & BUSHINGS

HEX



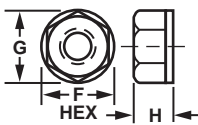
Basic Part Number	Thread	F	G	H
113794	2-56	.180	.205	.070
113796	3-48	.180	.205	.070
113798	4-40	.250	.275	.100
113800	6-32	.305	.350	.120
113802	6-40	.305	.350	.120
113804	8-32	.335	.380	.130
113806	10-24	.365	.420	.135
113808	10-32	.365	.420	.135
113810	1/4-20	.425	.510	.200
113812	1/4-28	.425	.510	.200
113814	5/16-18	.500	.575	.270
113816	3/8-16	.560	.630	.330
113818	1/2-13	.750	.860	.430
113820	5/8-11	.925	1.05	.550

CAP



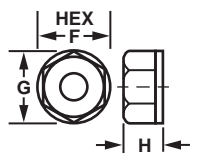
113822	4-40	.250	.275	.280
113824	6-32	.305	.350	.345
113826	8-32	.330	.385	.375
113828	10-24	.365	.420	.400
113830	10-32	.365	.420	.400
113832	1/4-20	.425	.510	.475
113823	1/4-28	.425	.510	.475
113825	5/16-18	.500	.575	.530
113827	3/8-16	.560	.630	.620
113829	1/2-13	.750	.860	.810
113831	5/8-11	.925	1.05	1.00

LOCK**



113834	2-56	.180	.205	.140
113836	4-40	.250	.275	.180
113838	6-32	.305	.350	.200
113840	8-32	.335	.380	.230
113842	10-24	.365	.420	.250
113844	10-32	.365	.420	.250
113846	1/4-20	.425	.510	.275

SELF-THREADING



113848	2-56	.180	.205	.110
113850	4-40	.250	.275	.180
113852	6-32	.305	.350	.200
113854	8-32	.335	.380	.230
113856	10-24	.365	.420	.250
113858	10-32	.365	.420	.250
113860	1/4-20	.425	.510	.275

Other material available, check with factory.

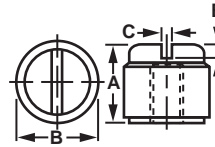
Color	Code
Natural	1
Black	2
Red	3
Blue	4
Purple	5
Brown	6
Orange	7
Green	8
Yellow	9

ORDER EXAMPLE:

113794 - N - 1

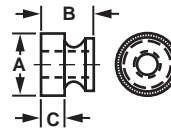
Basic Part Number Nylon Color: See chart

Choose color from chart, otherwise Natural is provided.



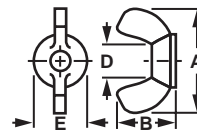
SLOTTED

Part Number	Thread	A	B	C	E
113862	4-40	.280	.317	.039	.045
113864	6-32	.324	.348	.044	.051
113866	8-32	.378	.381	.049	.059
113868	10-24	.357	.412	.056	.068
113870	10-32	.357	.412	.056	.068
113872	1/4-20	.383	.492	.070	.088



THUMB

Part Number	Thread	A	B	C
113874	4-40	.300	.280	.120
113876	6-32	.360	.275	.125
113878	8-32	.425	.305	.140
113880	10-24	.425	.325	.140
113882	10-32	.425	.325	.140
113884	1/4-20	.540	.365	.155



WING

Part Number	Thread	A	B	D	E
113886	4-40	.90	.50	.25	.41
113888	6-32				
113890	8-32				
113892	10-24				
113894	10-32				
113896	10-24	1.10	.63	.30	.56
113898	10-32				
113900	1/4-20				
113902	1/4-28				
113904	1/4-20				
113906	1/4-28	1.38	.72	.36	.65
113908	5/16-18				
113910	3/8-16				
113912	7/16-14	1.75	.90	.58	.85
113914	1/2-13				
113916	9/16-12				

**Locking element is located approx. on last two threads at exit side of nut with minor diameter undersize.

BLIND NUTS

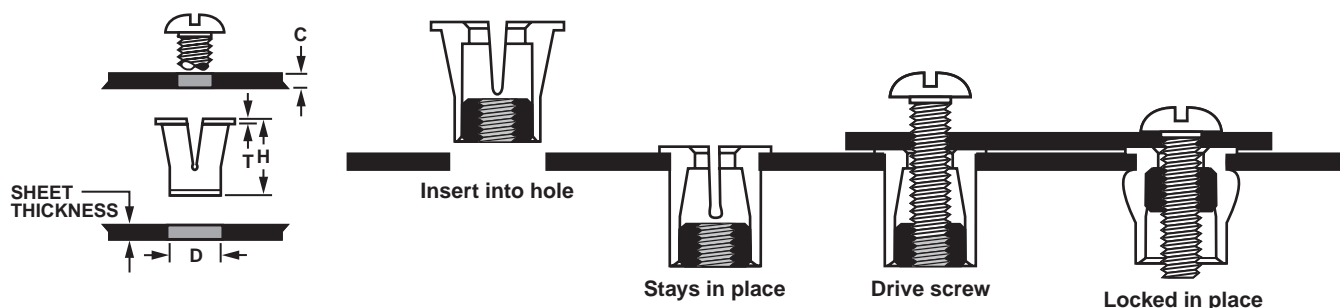
This Blind Nut fastener consists of a knurled aluminum/brass nut in a tapered wall nylon cage. Driving a screw into the nut during assembly draws the nut up, expanding the cage wall and locking it into the hole.

Blind Nuts are priced competitively, require only production tolerance round holes; have the lowest assembly cost of any blind nut; and thereby reduce the in-place cost.

FEATURES AND ADVANTAGES

- Spring tension of nylon cage securely holds nut in hole prior to final assembly
- Fits all sheet thicknesses. It can be used in metal, fiberglass and plastic
- Protects prefinished or brittle surfaces as only the nylon comes in contact with sheet material
- Makes assembly rattle-proof and dampens vibration
- Made from corrosion resistant materials; the nylon cage and the aluminum/brass nut

Insert into either drilled or stamped holes with finger pressure, requires no special installation tools.



How To Use Blind Nuts

1. Drill or stamp a hole to dimension D.
2. Push fastener into hole with finger pressure or light tap.
3. Select screw length as specified.
4. Locate component to be attached over Blind Nut and insert screw.
5. Drive screw until solid resistance is felt.
6. The component to be attached must not turn while driving the screw. Torque must not be transmitted from the screw head to the head of nylon cage. Washers alone are not acceptable since they will turn.

Available Material	
A	Aluminum
B	Brass

ORDER EXAMPLE:
301019 - A - 4-40

Basic Part Number Material: See chart Thread

Basic Part Number	Available Threads			H Cage Length	T Head Thick	D Hole Size	Minimum Recommended Screw Length	Average Pullout
	UNC	UNF	Metric					
301019A 301019B*	4-40	4-48	m2.5	5/16	.030	.250 ^{+.003} / _{-.000}	5/16 + Dim C	25 lbs
301020A 301020B*	6-32	6-40	m3	3/8	.030	.312 ^{+.004} / _{-.000}	3/8 + Dim C	85 lbs
301030A* 301030B*	8-32	—	m4	1/2	.030	.406 ^{+.005} / _{-.000}	1/2 +Dim C	220 lbs
301040A 301040B*	10-24	—	m5	1/2	.030	.406 ^{+.005} / _{-.000}	1/2 + Dim C	220 lbs
301045A 301045B*	—	10-32	m5	1/2	.030	.406 ^{+.005} / _{-.000}	1/2 + Dim C	220 lbs
301050A 301050B*	1/4-20	—	m6	5/8	.030	.500 ^{+.006} / _{-.000}	5/8 + Dim C	275 lbs
301055A* 301055B	—	1/4-28	m6	5/8	.030	.500 ^{+.006} / _{-.000}	5/8 + Dim C	275 lbs
301056A* 301056B	5/16-18 5/16-24	—	m8	.672	.030	.562 ^{+.006} / _{-.000}	11/16 + Dim C	300 lbs

*Available from stock, all others allow 4 to 6 weeks.

KNURLED PHENOLIC HAND SCREWS & NUTS

HAND SCREWS:

Cadmium Plated, Steel Male Threads

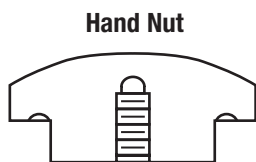
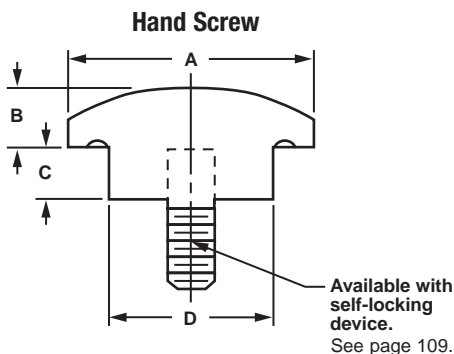
HAND NUTS:

Brass Female Threads

The metal screws and bushings cannot slip in the head under high torque loads because they are permanently locked in during the molding operation. Molded of phenolic plastic, these hand nuts and screws are excellent electrical insulators and have high heat resistance (up to 300° F) and are highly resistant to most chemicals and solvents.

Available in Black only.

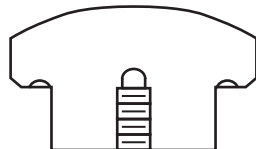
Styles Available:



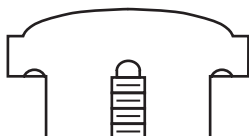
Nut or Screw Type
Fig. III



Nut or Screw Type
Fig. IV



Nut or Screw Type
Fig. V

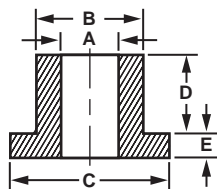


Nut or Screw Type
Fig. VI



Basic Part Number	Nuts Tapped Hole Size	Screws Threaded Stud Size & Length	A Head Dia & Style	B	C	D
101010	8-32	—	3/4 fig. III	1/4	9/32	5/8
101012	10-32	—				
101014	1/4-20	—				
101016	—	8-32x1/2				
101018	—	8-32x3/4				
101020	—	8-32x1				
101022	—	10-32x3/4				
101024	—	10-32x1				
101026	—	1/4-20x3/4				
101028	—	1/4-20x1				
101030	10-32	—	1 fig. IV	11/32	5/16	5/8
101032	1/4-20	—				
101034	—	10-32x1/2				
101036	—	10-32x3/4				
101038	—	10-32x1				
101040	—	1/4-20x1/2				
101042	—	1/4-20x3/4				
101044	—	1/4-20x1				
101046	—	1/4-20x1-1/2				
101048	10-32	—	1-3/8 fig. V	13/32	3/8	3/4
101050	1/4-20	—				
101052	5/16-18	—				
101054	3/8-16	—				
101056	—	1/4-20x1/2				
101058	—	1/4-20x3/4				
101060	—	1/4-20x1				
101062	—	1/4-20x1-1/2				
101064	—	5/16-18x3/4				
101066	—	5/16-18x1				
101068	—	5/16-18x1-1/2				
101070	—	5/16-18x2				
101072	—	3/8-16x1				
101074	—	3/8-16x1-1/2				
101076	—	3/8-16x2				
101078	1/4-20	—	1-7/8 fig. VI	1/2	1/2	1
101080	5-16-18	—				
101082	3/8-16	—				
101084	—	1/4-20x1/2				
101086	—	1/4-20x3/4				
101088	—	1/2-20x1				
101090	—	1/4-20x1-1/2				
101092	—	5/16-18x3/4				
101093	—	5/16-18x1				
101094	—	5/16-18x1-1/2				
101095	—	5/16-18x2				
101096	—	3/8-16x1				
101097	—	3/8-16x1-1/2				
101098	—	3/8-16x2				

BUSHINGS



Color	Code
Natural	1
Black	2
Red	3
Blue	4
Purple	5
Brown	6
Orange	7
Green	8
Yellow	9

Available Material (see page 276)			
A	Aluminum	Ph	Phenolic (Paper)
B	Brass	PhI	Phenolic (Linen)
C	Copper	L	Polycarbonate(Lexan)
S	Steel	PA	A.B.S.
SS	Stainless Steel	PP	P.V.C.
N	Nylon	T	Teflon
D	Delrin	F	Fibre

ORDER EXAMPLE:

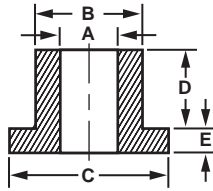
17200 - A - 1

Basic Part Number: 17200
 Material: A (See chart)
 Finish: 1 (See page 278)

EXAMPLE FOR NYLON & DELRIN PARTS:
 17200-N-2 ← BLACK
 Choose color from chart, otherwise Natural is provided.
 If any one dimension or tolerance change is required, add to part number. **EXAMPLE: 17200-A-1 (A=.080)**

Screw Size	A ID ± .005	B Shank OD ± .005	C Flange OD ± .005	D Shank Length ± .005	E Flange Thkns ± .005	Basic Part Number	Material	Finish
2	.093	.125	.187	.125	.062	17200		
	.093	.125	.187	.187	.062	17202		
	.093	.125	.187	.250	.062	17204		
	.093	.125	.187	.312	.062	17206		
	.093	.125	.187	.375	.062	17208		
4	.116	.215	.312	.168	.050	17301		
	.120	.310	.500	.130	.057	17303		
	.125	.156	.250	.125	.062	17210		
	.125	.156	.250	.187	.062	17212		
	.125	.156	.250	.250	.062	17214		
	.125	.531	.640	.171	.109	17305		
	.125	.234	.375	.109	.031	17307		
	.125	.234	.375	.140	.031	17309		
	.125	.250	.562	.250	.250	17311		
	.125	.312	.625	.098	.037	17313		
6	.140	.187	.375	.063	.062	17315		
	.140	.359	.625	.312	.031	17317		
	.141	.234	.375	.087	.093	17319		
	.144	.211	.275	.031	.140	17321		
	.147	.172	.312	.125	.062	17216		
	.147	.172	.312	.187	.062	17218		
	.157	.228	.290	.148	.031	17323		
	.150	.250	.375	.156	.062	17325		
	.156	.375	.625	.187	.125	17327		
	.165	.250	.375	.046	.062	17329		
8	.170	.380	.450	.155	.220	17331		
	.171	.242	.500	.062	.093	17333		
	.174	.218	.375	.187	.062	17220		
	.174	.218	.375	.250	.062	17222		
	.174	.218	.375	.312	.062	17224		
	.174	.218	.375	.375	.062	17226		
	.174	.218	.375	.437	.062	17228		
	.174	.218	.375	.500	.062	17230		
	.178	.300	.500	.750	.093	17335		
	.180	.292	.437	.031	.065	17337		
	.180	.328	.500	.218	.218	17339		
	.187	.296	.500	.050	.070	17341		
	.187	.310	.500	.168	.050	17343		
	.187	.312	.500	.140	.100	17345		
	.190	.312	.687	.212	.062	17347		
	.190	.343	.875	.141	.140	17349		

BUSHINGS



Color	Code
Natural	1
Black	2
Red	3
Blue	4
Purple	5
Brown	6
Orange	7
Green	8
Yellow	9

Available Material (see page 276)			
A	Aluminum	Ph	Phenolic (Paper)
B	Brass	Phl	Phenolic (Linen)
C	Copper	L	Polycarbonate(Lexan)
S	Steel	PA	A.B.S.
SS	Stainless Steel	PP	P.V.C.
N	Nylon	T	Teflon
D	Delrin	F	Fibre

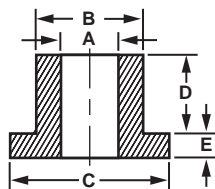
ORDER EXAMPLE:

17351 - A - 1
 Basic Part Number Material: See chart Finish: See page 278

EXAMPLE FOR NYLON & DELRIN PARTS:
 17351-N-2 ← BLACK
 Choose color from chart, otherwise Natural is provided.
 If any one dimension or tolerance change is required,
 add to part number. **EXAMPLE: 17351-A-1 (A=.080)**

Screw Size	A ID ± .005	B Shank OD ± .005	C Flange OD ± .005	D Shank Length ± .005	E Flange Thkns ± .005	Basic Part Number	Material	Finish
8	.190	.371	.578	.303	.038	17351		
10	.192	.375	.625	.377	.070	17353		
	.195	.250	.550	.062	.031	17355		
	.195	.300	.500	.406	.093	17357		
	.196	.300	.583	.156	.125	17359		
	.196	.300	.500	.375	.125	17361		
	.196	.312	.500	.171	.046	17363		
	.196	.343	.500	.406	.187	17365		
	.197	.296	.500	.125	.125	17367		
	.197	.681	.781	.125	.062	17369		
	.200	.250	.437	.187	.062	17232		
	.200	.250	.437	.250	.062	17234		
	.200	.250	.437	.312	.062	17236		
	.200	.250	.437	.375	.062	17238		
	.200	.250	.437	.437	.062	17240		
	.200	.250	.437	.500	.062	17242		
	.200	.300	.562	.260	.120	17371		
	.200	.312	.500	.187	.062	17373		
	.201	.437	1.000	.250	.187	17375		
	.203	.312	.437	.038	.093	17377		
	.203	.531	.625	.500	.125	17379		
.210	.343	.625	.140	.062	17381			
12	.218	.359	.555	.530	.103	17383		
	.218	.359	.484	.172	.062	17385		
	.219	.315	.562	.141	.078	17387		
	.222	.697	.750	.250	.187	17389		
	.234	.353	.656	.178	.103	17391		
	.235	.355	.650	.171	.109	17393		
	.237	.312	.500	.300	.062	17395		
	.238	.375	.500	.125	.125	17397		
	.240	.359	.665	.115	.109	17399		
14	.250	.296	.395	.178	.040	17401		
	.250	.312	.500	.344	.156	17403		
	.250	.359	.500	.093	.062	17405		
	.250	.370	.710	.150	.053	17407		
	.250	.375	.500	.375	.234	17409		
	.250	.437	1.000	.500	.250	17411		
	.250	.500	1.000	.093	.171	17413		
1/4	.252	.371	.578	.302	.038	17415		
	.252	.375	.500	.250	.234	17417		
	.253	.440	.937	.165	.125	17419		

BUSHINGS



Color	Code
Natural	1
Black	2
Red	3
Blue	4
Purple	5
Brown	6
Orange	7
Green	8
Yellow	9

Available Material (see page 276)			
A	Aluminum	Ph	Phenolic (Paper)
B	Brass	Phl	Phenolic (Linen)
C	Copper	L	Polycarbonate(Lexan)
S	Steel	PA	A.B.S.
SS	Stainless Steel	PP	P.V.C.
N	Nylon	T	Teflon
D	Delrin	F	Fibre

ORDER EXAMPLE:

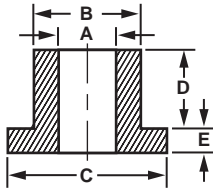
17421 - A - 1

Basic Part Number: 17421
 Material: A (See chart)
 Finish: 1 (See page 278)

EXAMPLE FOR NYLON & DELRIN PARTS:
 17421-N-2 ← BLACK
 Choose color from chart, otherwise Natural is provided.
 If any one dimension or tolerance change is required, add to part number. **EXAMPLE: 17421-A-1 (A=.080)**

Screw Size	A ID ± .005	B Shank OD ± .005	C Flange OD ± .005	D Shank Length ± .005	E Flange Thkns ± .005	Basic Part Number	Material	Finish
1/4	.255	.311	.437	.072	.062	17421		
	.255	.312	.625	.203	.031	17423		
	.255	.320	.625	.109	.031	17425		
	.255	.370	1.250	.062	.062	17427		
	.255	.375	.635	.212	.062	17429		
	.255	.377	.500	.687	.062	17431		
	.255	.386	.718	.140	.156	17433		
	.255	.490	.750	.110	.090	17435		
	.256	.375	.750	.682	.062	17437		
	.256	.380	.500	.437	.062	17439		
	.258	.317	.562	.313	.062	17441		
	.260	.312	.500	.187	.062	17244		
	.260	.312	.500	.250	.062	17246		
	.260	.312	.500	.312	.062	17248		
	.260	.312	.500	.375	.062	17250		
	.260	.312	.500	.437	.062	17252		
	.260	.312	.500	.500	.062	17254		
	.260	.348	.562	.518	.031	17443		
	.260	.363	.500	.438	.062	17445		
	.260	.372	.500	.125	.125	17447		
	.260	.443	.562	.250	.062	17449		
	.260	.609	.750	.050	.125	17451		
	.263	.375	.500	.375	.062	17453		
	.265	.339	.750	.188	.062	17455		
	.265	.375	.625	.140	.140	17457		
	.265	.377	.500	.687	.062	17459		
	.266	.359	.625	.171	.250	17461		
	.273	.375	.500	.710	.040	17463		
	.280	.615	1.000	.625	.125	17465		
	.281	.380	.500	.125	.125	17467		
.281	.500	.875	.500	.250	17469			
.296	.370	.609	.187	.109	17471			
.310	.370	.500	.225	.035	17256			
.310	.455	.560	.085	.060	17258			
.310	.355	.458	.288	.040	17473			
5/16	.312	.365	.615	.130	.035	17475		
	.312	.412	.562	1.312	.050	17477		
	.312	.500	.796	.782	.218	17479		
	.312	.800	.980	1.375	.187	17481		
	.315	.365	.562	.281	.062	17483		
	.317	.500	1.281	.125	.125	17485		

BUSHINGS



Color	Code
Natural	1
Black	2
Red	3
Blue	4
Purple	5
Brown	6
Orange	7
Green	8
Yellow	9

Available Material (see page 276)			
A	Aluminum	Ph	Phenolic (Paper)
B	Brass	Phl	Phenolic (Linen)
C	Copper	L	Polycarbonate(Lexan)
S	Steel	PA	A.B.S.
SS	Stainless Steel	PP	P.V.C.
N	Nylon	T	Teflon
D	Delrin	F	Fibre

ORDER EXAMPLE:

17487 - A - 1

Basic Part Number

Material: See chart

Finish: See page 278

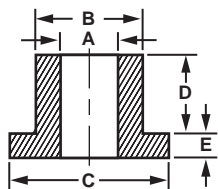
EXAMPLE FOR NYLON & DELRIN PARTS:

17487-N-2 ← BLACK

Choose color from chart, otherwise Natural is provided. If any one dimension or tolerance change is required, add to part number. **EXAMPLE: 17487-A-1 (A=.080)**

Screw Size	A ID ± .005	B Shank OD ± .005	C Flange OD ± .005	D Shank Length ± .005	E Flange Thkns ± .005	Basic Part Number	Material	Finish
5/16	.318	.437	.625	.500	.062	17487		
	.318	.437	.625	.503	.075	17489		
	.390	.320	.750	.406	.125	17491		
	.320	.437	.625	.250	.062	17493		
	.321	.470	.625	.312	.062	17495		
	.323	.370	.437	.062	.050	17497		
	.323	.370	.437	.137	.050	17499		
	.325	.437	.625	.531	.093	17501		
	.332	.443	.625	.750	.093	17503		
	.332	.450	.750	.125	.062	17505		
	.335	.617	.870	.490	.130	17260		
	.337	.462	.625	.562	.062	17507		
	.350	.375	.500	.343	.265	17509		
	.365	.685	1.238	.185	.310	17262		
	.370	.906	1.000	.375	.062	17511		
	.375	.500	.555	.100	.060	17264		
	.375	.430	.500	.220	.030	17266		
	.375	.493	.755	.030	.125	17268		
	.375	.490	.755	1.010	.130	17270		
	.375	.490	.995	.050	.175	17272		
	.375	.430	.695	.375	.062	17513		
	.375	.437	.625	.062	.031	17515		
	.375	.468	.687	.093	.078	17517		
	.375	.468	.687	.188	.062	17519		
	.375	.496	.750	.242	.070	17521		
	.375	.500	.625	.060	.133	17523		
	.375	.500	.625	.133	.060	17525		
	.375	.500	.625	.253	.062	17527		
.375	.500	.750	.156	.312	17529			
.375	.500	.750	.438	.062	17531			
.375	.500	.750	.190	.065	17533			
.375	.500	1.125	.190	.500	17535			
.375	.500	.745	.750	.062	17537			
.375	.500	.734	.625	.312	17539			
.375	.500	.734	.625	.312	17541			
3/8	.380	.500	.750	.296	.078	17543		
	.380	.500	.625	.515	.031	17545		
	.380	.525	.765	1.218	.218	17547		
	.380	.560	.750	.562	.250	17549		
	.380	.575	.625	.250	.062	17551		
	.380	.625	1.125	.250	.125	17553		

BUSHINGS



Color	Code
Natural	1
Black	2
Red	3
Blue	4
Purple	5
Brown	6
Orange	7
Green	8
Yellow	9

Available Material (see page 276)			
A	Aluminum	Ph	Phenolic (Paper)
B	Brass	Phl	Phenolic (Linen)
C	Copper	L	Polycarbonate(Lexan)
S	Steel	PA	A.B.S.
SS	Stainless Steel	PP	P.V.C.
N	Nylon	T	Teflon
D	Delrin	F	Fibre

ORDER EXAMPLE:

17555 - A - 1

Basic Part Number: 17555
 Material: A (see chart)
 Finish: 1 (see page 278)

EXAMPLE FOR NYLON & DELRIN PARTS:
 17555-N-2 ← BLACK
 Choose color from chart, otherwise Natural is provided.
 If any one dimension or tolerance change is required, add to part number. **EXAMPLE: 17555-A-1 (A=.080)**

Screw Size	A ID ± .005	B Shank OD ± .005	C Flange OD ± .005	D Shank Length ± .005	E Flange Thkns ± .005	Basic Part Number	Material	Finish
3/8	.382	.500	1.000	.500	.062	17555		
	.382	.531	.656	.671	.109	17557		
	.385	.500	.750	.065	.185	17274		
	.385	.505	.625	.562	.187	17559		
	.385	.570	.750	.539	.086	17561		
	.385	.625	.750	.500	.093	17563		
	.390	.515	.640	.750	.062	17565		
	.392	.510	.637	.309	.062	17567		
	.400	.500	.750	.090	.130	17276		
	.406	.690	.750	.312	.125	17569		
	.415	.560	.750	.550	.080	17278		
	.415	.625	.703	2.000	.062	17571		
	.420	.560	.615	.315	.375	17280		
	.422	.750	.984	.500	.125	17573		
	.430	.500	.750	.036	.187	17282		
.434	.747	.993	.115	.135	17575			
7/16	.442	.630	1.275	.750	.187	17577		
	.442	.630	1.250	1.250	.437	17579		
	.447	.625	.750	.125	.062	17581		
	.450	.625	1.275	.740	.125	17583		
	.453	.520	.625	.156	.046	17585		
	.453	.627	.750	.500	.093	17587		
	.470	.531	.937	.062	.087	17589		
	.470	.531	.937	.190	.084	17591		
	.470	.531	.937	.468	.087	17593		
	.472	.575	.625	.257	.062	17595		
.484	.531	.625	.110	.036	17597			
1/2	.500	.620	.875	.190	.065	17284		
	.500	.906	1.000	.375	.062	17599		
	.505	.690	.810	.370	.130	17286		
	.505	.690	.810	.430	.065	17288		
	.506	.628	.750	1.380	.060	17601		
	.508	.578	.750	.343	.031	17603		
	.510	.625	.875	.375	.125	17605		
	.515	.637	.750	.187	.250	17607		
	.520	.625	.796	.359	.062	17609		
	.522	.630	.750	.187	.062	17611		
	.531	.747	.993	.240	.135	17613		
	.565	.665	.750	.647	.040	17615		
	.578	.687	.921	.735	.046	17617		
	.593	.785	.900	.375	.125	17619		